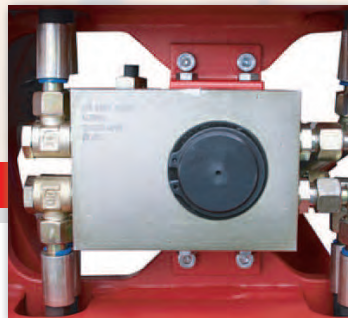




## >> Paper Roll Clamps

360 degree continuous rotation G Serie

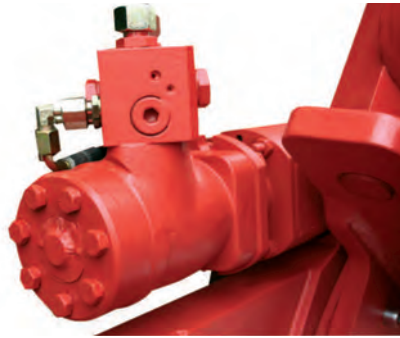


**Hans H. MEYER GmbH**

Gittertor 14 · 38259 Salzgitter

Tel +49 - (0) 5341 803-0 · Fax +49 - (0) 5341 803-195





## >> Sensitive and safe

- > 2-components direct drive for exact positioning of rolls
- > Oil motor with hydraulic brake for highest operating safety

## >> Damage-free clamping

- > New pad stop design
- > Slim pad and arm design for tight stacking
- > Optimum visibility through arms for safe handling

## >> Low maintenance

- > Cylinder shafts contained in maintenance-free bushes for long life and easy service

## >> Modular build

- > Optimal hydraulics with exchangeable components
- > Optional hydraulic adjustment of the short clamping arm, at 45 degrees (Version A) or in any position (Version B)
- > Changing of the short arm design from fixed to hydraulic adjustment is possible by simple modification



# Generation G: The advantages



## >> Safe handling

- > Equipped with adjustable pressure relief valve
- > Reduction of clamp pressure directly at the clamp
- > Clamp hydraulic system protected from high truck pressures



## >> Guaranteed quality

- > MEYER products are developed and manufactured in accordance with highest standards. Our certified quality management system guarantees highest reliability down to the last detail



MEYER - Made in Quality!







1

Pressure gauge and display



2

Measuring in progress

1+2

### Measuring the clamping force

Pressure measuring unit for setting the area pressure of the paper roll clamp contact pads.

Available as an accessory.



3

Mast Tilt Sensor



4

Paper Save

3

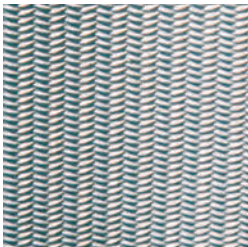
### Mast tilt sensor

For vertical positioning of the mast.

4

### Paper Save

Protection against damage of paper rolls in storage.



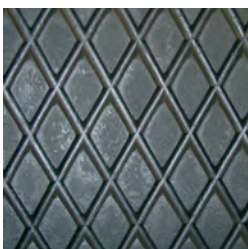
Cast pad\*with high-friction surface



Steel-sprayed pad



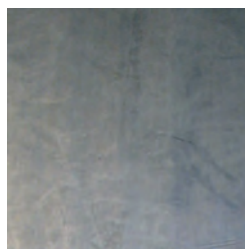
Polyurethane



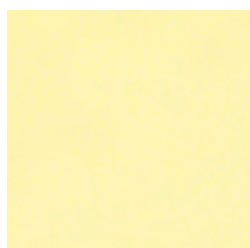
Diamond pattern black



Diamond pattern white



Rubber-faced pad, smooth black



Rubber-faced pad, smooth white

### Important: Always the right grip

The correct pad facing depends on the type of paper roll specification.

\***standard:** Cast pads with high-friction surface